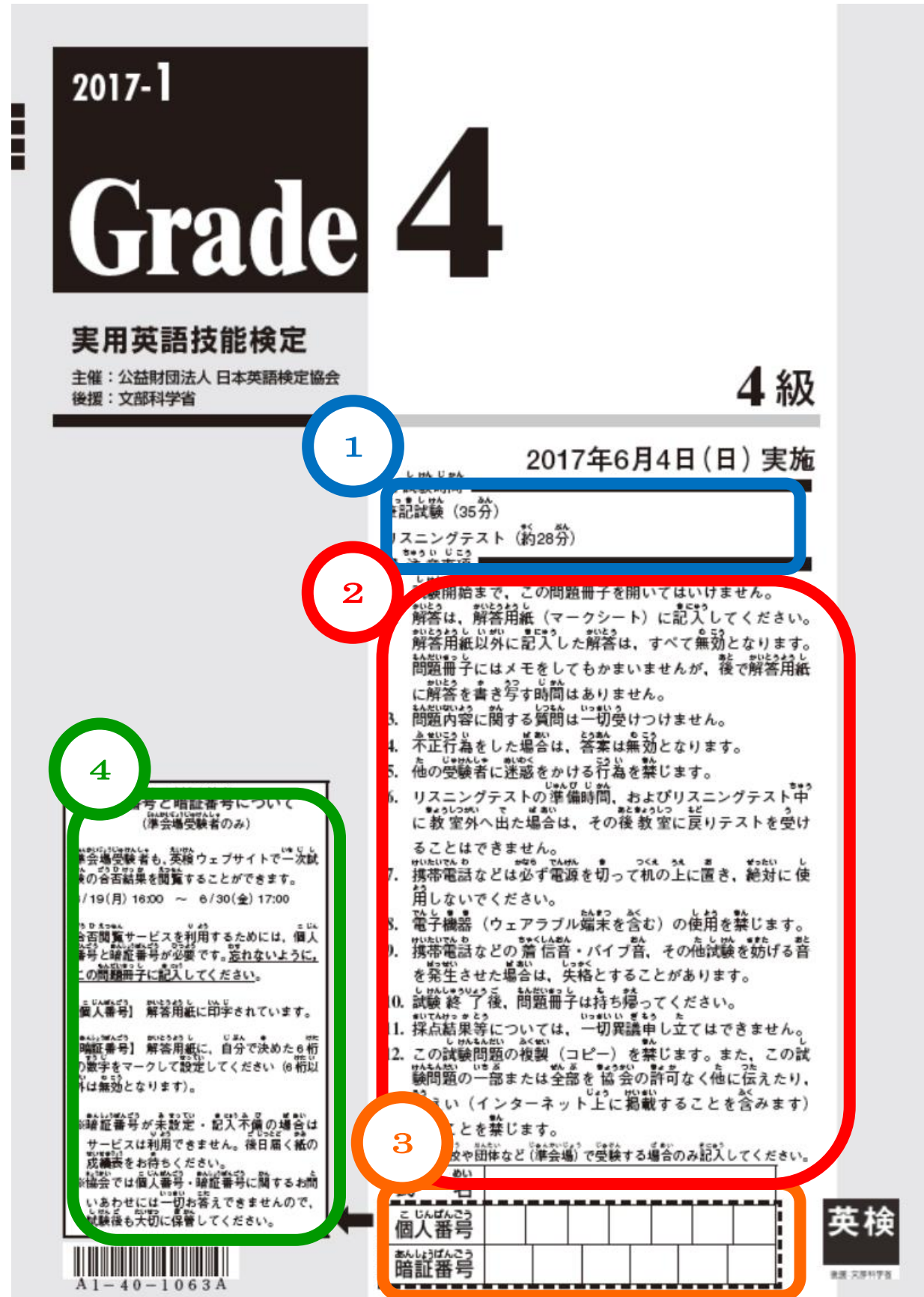


# 4級 英語

Please note that bringing the translated test booklet into the test site is not allowed.



1

## Test Duration

- Written Test (35 minutes)
- Listening Test (Approximately 28 minutes)

2

## Notice

1. Do not open the test booklet until instructed to do so.
2. Fill in the ovals on your answer sheet. Any answers written outside the answer sheet will be considered invalid. You may take notes on the test booklet, but there may not be enough time to copy answers to your answer sheet later.
3. You may not ask questions regarding the content of the test.
4. Failure to follow the rules will result in your answer sheet being considered invalid.
5. Harassment of other examinees is prohibited.
6. If you exit the examination room during preparation for the listening test or during the listening test, you will not be permitted to return to the examination room to complete the test.
7. Cell phones and other devices must be turned off and placed on your desk and must not be used during the test.
8. Usage of electronic devices, including wearable devices, is prohibited.
9. If you cause noise, such as ring tones or vibration from your cell phone or other noise that interrupts the test, you may be disqualified from continuing the test.
10. Please take the test booklet home with you after the test.
11. Questions regarding the test results are not permitted.
12. The test booklet may not be reproduced or distributed in any form, including posting on the Internet, without prior written consent from the Eiken Foundation of Japan.

\* Fill in only if you are taking the test at your own school or as a group (a specially designated venue).

3

学 Year in school										相 Class
氏 Name										
個人番号 Examinee Number										
暗証番号 PIN Number										

**Examinee Number and PIN Number  
(For examinees who are taking the test at a specially designated site.)**

4

Test results for the first-stage examination will be posted on the Eiken website from February 5 (Fri) 16:00 until February 19 (Fri) 17:00.

Examinee number and PIN are required in order to view test results. Make sure to write them on this booklet.

[Examinee Number] Printed on your answer sheet.

[PIN] Create a 6-digit number of your choice and fill in the corresponding ovals. (A number with more than 6-digits is invalid.)

Note: The service will not be available for use if a PIN is not created or filled in. In such a case, please wait to receive the test results by post.

Note: The Eiken Foundation of Japan cannot answer any questions regarding Examinee Number or PIN. Please keep your information safe after the test.

5

1) 英検ウェブサイトでの解答速報  
<http://www.eiken.or.jp>  
 \* 6月5日 13:00以降

2) 結果通知方法  
 ◆協会の指定した公開会場(本会場)で受験した場合  
 一次個人成績表に合格結果を記載して、6月26日までに送付します。未着の場合は6月27日以降に英検サービスセンター-03(3266)8311(平日10:00~17:00)までお問い合わせください(お問い合わせの際には受験番号もお知らせください)。  
 ◆自分の学校や団体など(準会場)で受験した場合  
 一次個人成績表は6月26日までに申込責任者(学校の先生または団体の担当者の方)あてに送付します(個人あてには送付しません)。合格した方には合格証書と合格証明書もお送りしますので、申込責任者から受け取ってください。

3) 合格およびスコアの通知について  
 合格者には「合格」、不合格者には「不合格」で合格結果を通知します。また、技能別スコア、合格スコア、解答状況、技能別正答数も表示されます。なお、各技能は下記の大問により測定されます。  
 \*「Reading」—大問[1]~[4] \*「Listening」—第1~3部

6

### 2017年度第1回4級・5級スピーキングテストのお知らせ

4級・5級一次試験に申し込んだ方全員に、申し込み級と同一級のスピーキングテストの受験資格があります。スピーキングテストは対面式の面接ではなく、受験者個人又は団体が用意したコンピュータ端末を使って受験し、応答を録音する方式です。資格の認定(級の可否)は従来通り一次試験のみで判定します。

- ・スピーキングテストの受験に必要な「英検ID」と「パスワード」は、一次試験の結果通知の際、成績表に記載されます。
- ・受験開始日から1年以内にスピーキングテスト受験サイトにログインし、スピーキングテストを受験してください。
- ・スピーキングテストの結果は、受験後1か月を目途にウェブ上で閲覧できます。一次試験とは別に、スピーキングテストのみの合格が判定されます。
- ・スピーキングテストの受験に当たっては、「4級・5級スピーキングテスト受験規約」を遵守してください。受験開始日などの受験に関する詳しい情報は英検ウェブサイトの「4級・5級スピーキングテストのご紹介」をご覧ください。スピーキングテスト受験サイトにもこちらからアクセスできます。

4級・5級スピーキングテストのご紹介



<http://www.eiken.or.jp/eiken/exam/4/>

7

注意事項  
 ・団体申込の場合の受験者の個人情報は、団体申込責任者を通じて協会が取得します。また、取得した個人情報は、英語検定業務の円滑な実施、受験者に対する「合格証明書」発行等のサービスの提供、および試験実施の円滑化のために利用いたします。なお、受験運営に際し、権利を行使することがあります。また、これ以外の目的に利用する場合は、協会の同意を得た上でを行います。  
 ・団体申込の場合の受験者の合格証書は、原則として団体申込責任者宛に送付されます。また、合格者情報、および合格証書は団体申込責任者が取り扱うことをご承諾ください。  
 ・同一日に同じ級を複数回申し込みおよび受験することはできません。受験した場合は、両方とも無効になります。

## About the First-Stage Test Results

5

1) Answers will be posted on the Eiken website  
 (<http://www.eiken.or.jp>)

\*Answers will be available after 13:00 on June 5.

### 2) Result Notification Method

◆For examinees who take the test at a main test site designated by the Eiken Foundation.

The results will be indicated on the examinee pass/fail notification, posted by June 26. (For examinees who pass, the upper right hand section of the first-stage pass/fail notification will be the second-stage admission ticket.) If you do not receive your results by this date, please contact the Eiken Service Center at 03-3266-8311 (10:00 am - 5:00 pm weekdays) after June 27. (Please provide your Examinee Number).

◆For examinees who take the test at a specially designated site, such as your school, or as a group.

Notification of first-stage pass/fail will be posted by the person in charge of test applications (the school teacher or person who filed the group application) by June 26. (Results will not be posted to individual examinees.)

### 3) Notification of Pass/Fail and Score

The examinee pass/fail notification will indicate “Pass” for examinees who passed the test, and “Fail” for those who did not pass the test. Additionally, the notification will include your scores by skill category of each skill, the passing score, the examinee’s answers, and the number of correct answers by skill category of each skill. Each skill category will be assessed in the following sections of the test:

\*Reading Comprehension—Sections [1]-[4] \*Listening Comprehension—Parts 1-3

6

All people who applied for Grade 4 & 5 first-stage tests are eligible for taking a speaking test of that grade. The speaking test is not a face-to-face interview; it is a virtual test that uses your personal computer or a computer prepared by the testing organization to record and evaluate your answers. However, please note that your Grade 4 & 5 qualification (pass/fail) will be certified based only on the first-stage test, as in past tests.

- The Eiken ID and password required when taking the speaking test will be indicated on the examinee pass/fail notification of the first-stage test.
- You may take the speaking test by logging into the examination website within a period of one year.
- The result of your speaking test will be posted on the website about one month after your test date. Pass/fail of your speaking test will be shown separately from the result of your first-stage test.
- When taking the speaking test, make sure to comply with the Testing Policy of Grade 4 & 5 Speaking Tests. For details, see the Introduction to Grade 4 & 5 Speaking Tests (this website provides a link to the examination website):

[Introduction to Grade 4 & 5 Speaking Tests](#)

## Notice

7

- In case of group applications, examinees' private information is acquired by the Eiken Foundation of Japan from the person who filed the group application. Acquired private information will be used for implementing smooth operation of English certification tests, providing services to those who pass the tests, such as issuing certificates, or for statistical purposes. Some operations may be outsourced. Private information will not be used for other purposes without agreement from examinees.
- The test results for a group application will normally be posted to the person who filed the application. Please note that the person who filed the application will know the examinees' information and results.  
An examinee is not permitted to take multiple tests of the same grade in one test period. If such a case occurs, both tests will be considered invalid.

# 英語用

Grade 4

1

次の(1)から(15)までの( )に入れるのに最も適切なものを1, 2, 3, 4の中から一つ選び、その番号のマーク欄をぬりつぶしなさい。

Grade 4

2

次の(16)から(20)までの会話について、( )に入れるのに最も適切なものを1, 2, 3, 4の中から一つ選び、その番号のマーク欄をぬりつぶしなさい。

Grade 4

3

次の(21)から(25)までの日本語の意味を表すように①から⑤までを並べかえて [ ] の中に入れなさい。そして、2番目と4番目にくるものの最も適切な組合せを1, 2, 3, 4の中から一つ選び、その番号のマーク欄をぬりつぶしなさい。※ただし、( )の中では、文のはじめにくる語も小文字になっています。

Grade 4

4

A

次のメモの内容に関して、(26)と(27)の質問に対する答えとして最も適切なものを1, 2, 3, 4の中から一つ選び、その番号のマーク欄をぬりつぶしなさい。

Grade 4

4

B

次の手紙文の内容に関して、(28)から(30)までの質問に対する答えとして最も適切なもの、または文を完成させるのに最も適切なものを1, 2, 3, 4の中から一つ選び、その番号のマーク欄をぬりつぶしなさい。

Grade 4

4

C

次の英文の内容に関して、(31)から(35)までの質問に対する答えとして最も適切なもの、または文を完成させるのに最も適切なものを1, 2, 3, 4の中から一つ選び、その番号のマーク欄をぬりつぶしなさい。

Grade 4

1

Complete (1) through (15) by choosing the best answer from among choices 1, 2, 3, and 4. Then, on your answer sheet, fill in the oval of the number you chose.

Grade 4

2

For dialogues (16) through (20), choose the best answer from among choices 1, 2, 3, and 4. Then, on your answer sheet, fill in the oval of the number you chose.

Grade 4

3

Complete (21) through (25) by arranging words 1 through 5 in correct grammatical order to match the meaning of the Japanese sentence. Then, select from 1, 2, 3, and 4 the correct combination of the second and fourth words. On your answer sheet, fill in the oval of the number you chose. Note that the words which should come at the beginning of the sentence also appear in lower case.

Grade 4

4

A

Based on the content of the following note, complete (26) and (27) by choosing the response from among choices 1, 2, 3, and 4. Then, on your answer sheet, fill in the oval of the number you chose.

Grade 4

4

B

Based on the content of the following letter, complete (28) to (30) by choosing the response from among choices 1, 2, 3, and 4 that best answers or completes the question. Then, on your answer sheet, fill in the oval of the number you chose.

Grade 4

4

C

Based on the content of the following text, complete (31) to (35) by choosing the response from among choices 1, 2, 3, and 4 that best answers or completes the question. Then, on your answer sheet, fill in the oval of the number you chose.

# Listening Test

## 4級リスニングテストについて

① このテストには、第1部から第3部まであります。

英文は二度放送されます。

第1部	イラストを参考にしながら対話と応答を聞き、最も適切な応答を1, 2, 3の中から一つ選びなさい。
第2部	対話と質問を聞き、その答えとして最も適切なものを1, 2, 3, 4の中から一つ選びなさい。
第3部	英文と質問を聞き、その答えとして最も適切なものを1, 2, 3, 4の中から一つ選びなさい。

② No.30 のあと、10秒すると試験終了の合図がありますので、筆記用具を置いてください。

# Listening Test

## About Grade 4 Listening Comprehension Test

① This listening comprehension test consists of Part 1, Part 2 and Part 3.

English sentences are read twice.

Part 1	Look at the illustration and listen to the dialogue and response. Choose the best response from among choices 1, 2 and 3.
Part 2	Listen to the dialogue and question. Choose the best answer from among choices 1, 2, 3 and 4.
Part 3	Listen to the English sentences and choose the best answer from among choices 1, 2, 3 and 4.

② Ten seconds after Question No. 30, you will hear an announcement that the test has ended. Put down your pencil at that time